



**Installation
Instructions**

**HARLEY DAVIDSON M8
Softail 2-into-1
Fitment 2- Wide tire and Saddlebag**

Rev: 4/2019

Thank you for buying a RINEHART exhaust system. We are committed to providing you a quality product that with the proper installation and care will last you for many years to come.

Please be sure to read the instructions fully and inspect all components of your new system before installation. If you do not have an understanding of how to remove your stock system, or how to install the RINEHART exhaust system you should seek the advice and/or skill of a professional mechanic. Please keep all OEM parts as some may be used for the installation of the RINEHART exhaust system. If you are installing the system and are not the owner, please return these instructions to the owner as they contain important information that may be required at a later date.

If you have questions pertaining to the installation, please contact our technical service department: 1.877.264.8282 or visit www.rinehartracing.com.

Exhaust systems manufactured by Rinehart Racing are non-catalyst. A stock catalyst exhaust system cannot be replaced with a non-catalyst exhaust system. Please verify the application with your dealer before purchase.

ITEMS SUPPLIED		
Description		Qty.
2-1 Header		1
Muffler		1
Front Heat Shield		1
Rear Heat Shield		1
Collector Shield		1
HK-M8ST2-1 BAG		1
Mounting Bracket		1

INSTALLATION INSTRUCTIONS

1. Start by unplugging the front and rear OEM O2 sensors. Note the wire routing as it will be reinstalled later.
2. On all models with floor boards, remove the floor board mounting bolts. This will provide better access to the exhaust system.
3. Remove the OEM exhaust system along with the stock rear mounting bracket.
4. Remove the OEM exhaust flanges and cir-clips. Be careful as both the exhaust flanges and the cir-clips will be reused (replace damaged cir-clips).
5. Install the OEM exhaust flanges and cir-clips on Rinehart system.
Install the new mounting bracket using the frame holes that the stock bracket was removed from, wide tire models require 1/8" spacers behind the bracket and the 1" low profile bolts. Standard tire models will use the 3/4" spacers and the 1.5" low profile bolts.
6. If applicable, remove OEM O2 sensors from the front and rear OEM exhaust and install in your new system. Bung adaptors are supplied for use with 12mm sensors. Hint: apply a small amount of anti-seize to the threads on the sensors before installing. Torque to 20ft. lbs.
7. Remove the OEM gaskets and install provided exhaust gaskets. **Failure to do so will cause fitment issues with the new header.**
8. Install the header using OEM flange nuts finger tight. Install the muffler clamp on the inlet of the muffler.
9. Slide (2) 5/16-18 x 3/4" bolts into the mounting bracket on muffler. Slide muffler onto the header. Some models may require the 1" bolts and 1/4" spacers to properly align with mounting bracket. Insert bolts through the bracket and install 5/16" flat washers and 5/16" nylok nuts finger tight.
10. If applicable, re-connect the front and rear O2 sensors and zip tie away from engine.
11. Align muffler and tighten the flange nuts first (torque 8-10 ft lbs.) then tighten the 5/16-18 nylok nuts (torque 13-15ft. lbs.) in the rear mounting bracket.
12. Tighten the muffler clamp (40-45 ft. lbs.)
13. Install heat shield clamps (supplied) in both front and rear heat shields. Install heat shields and tighten all heat shield clamps. Be sure to position the clamps so the bolts are hidden from view. Use the larger hose clamp for the collector shield, position the small standoff tabs on the rear of the shield against the canister inlet weld seam for proper alignment. **(Failure to do so will result in scratch on the Heatshields and the Canister)**
14. On models with floorboards use the 1/2" spacers and longer bolts to move floorboard out away from the heatshield. For models with saddlebags use the hole in the top of the bracket and spacer with longer bolt to relocate the bag support (see picture below). Wide tire models will use the same hole to relocate the passenger peg, a 3/8-16 flange nut is provided for the peg bolt.

Important! Wipe down complete system with glass cleaner *before* starting bike to remove any finger prints or dirt.

Note: Finger prints that are not removed before running will become permanently etched in the pipes.

Check all mounting fasteners after first ride and again at all service intervals.

PLEASE NOTE

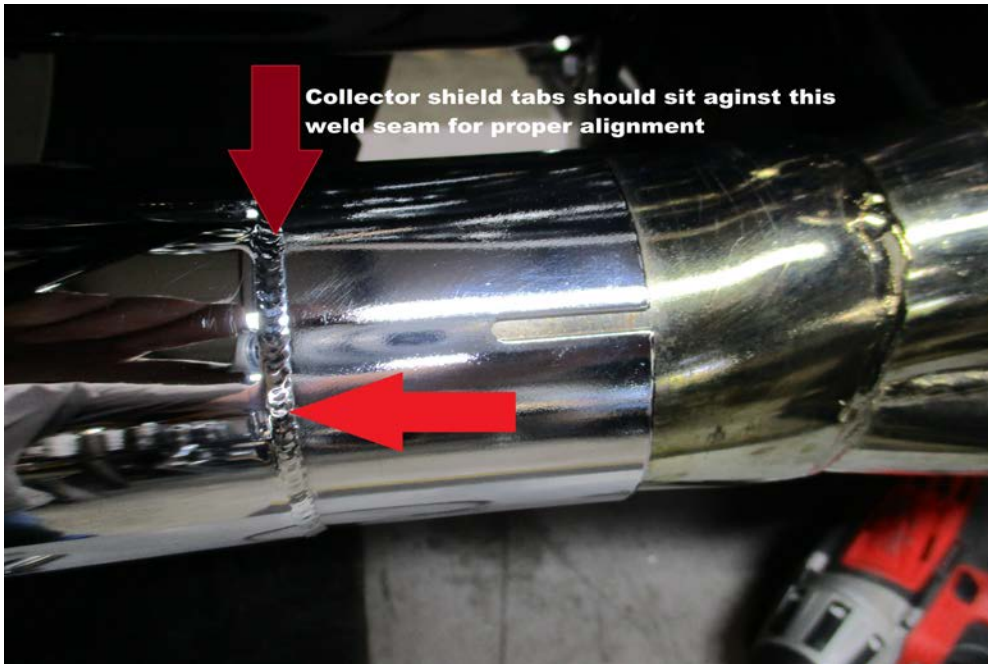
Our warranty applies only when the system is installed correctly and used for its intended purpose. Warranty does not apply when damage is the result of normal wear and tear, improper use, neglect or incorrect engine configuration. Please inspect *PRIOR* to installation. See warranty notice in box for more information.

TUNING

Adjustment of fuel injection is REQUIRED to optimize performance and minimize chrome discoloration. We recommend that adjustment of fuel injection be performed by QUALIFIED technicians on a dynamometer utilizing an Exhaust Gas Analyzer.



Proper installation for Heritage bag mount



Collector shield tabs should sit against this weld seam for proper alignment

Fitment for Fat Boy, Breakout, Heritage, SportGlide