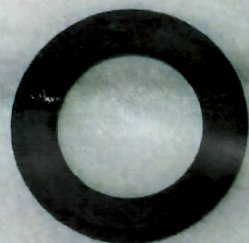




CALIBRATED ABS SENSOR PLATE



0071-0005



0071-0006



0071-0007



0071-0008



0071-0009

PERFORMANCE MACHINE LIMITED WARRANTY INFORMATION

Performance Machine warrants to the original purchaser that the parts of this sensor kit to be free of manufacturing defects in materials and workmanship for a period of one (1) year from the date of purchase. In the event warranty service is required, you must call Performance Machine immediately with a description of the problem.

If it is deemed necessary for Performance Machine to make an evaluation to determine whether the part is defective, a return authorization number will be given by Performance Machine. The parts must be packaged properly so as to not cause further damage and returned prepaid to Performance Machine with a copy of the original invoice of purchase and a detailed letter outlining the nature of the problem. If after evaluation by Performance Machine the part was found to be defective it will be repaired or replaced at no cost to you. If we replace it, we may replace it with a reconditioned one of the same design.

Performance Machine shall not be held liable for any consequential or incidental damages resulting from the failure of a Performance Machine part.

Performance Machine shall have no obligation if a part becomes defective as a result of improper installation or abuse.

IMPORTANT NOTICE

Before installing this ABS sensor kit, read through these instructions completely; this will familiarize you with the way in which the parts fit together and the tools needed to complete the job.

The sensor kit involves alterations to your motorcycle and may void your factory warranty. PM STRONGLY recommends this installation be done by an experienced motorcycle mechanic.

DISCLAIMER

These Performance Machine parts are designed for high performance motorcycle applications and are intended for the very experienced rider only. The installation of these Performance Machine parts may adversely effect or void your factory warranty.

If you have received a wheel without a pressed in PM ABS Sensor plate skip to step 3 for installation.

1. Remove the front wheel if not already off the bike.

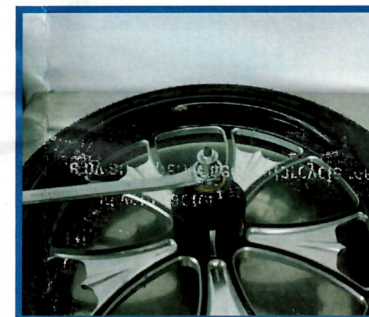
NOTE: Refer to your HD service manual for additional instructions.



2. Begin by installing your wheel bearing removal tool in a way that it will only capture the ABS sensor spacer and not the whole bearing itself. With the tool installed on the wheel follow the instructions to remove the bearing.

NOTE: Your instructions may vary depending on your removal tool. We suggest using JIM'S Tools # 939.

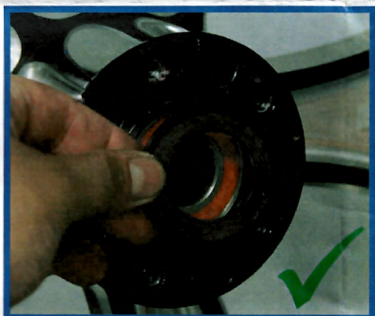
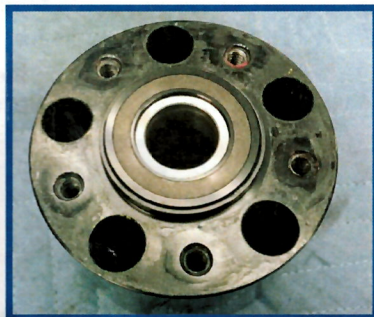
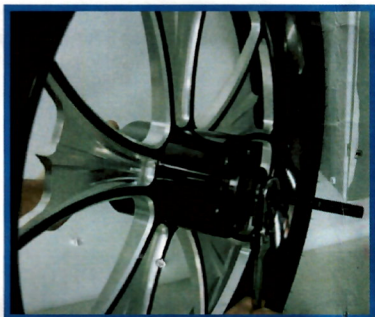
NOTE: Use painters tape or rags to protect the disc when using the bearing removal tool.





3. Inspect your new sensor plate and verify the sensor plate wheel size label matches your wheel and tire size. Using the incorrect ABS sensor plate can result in improper ABS function.
4. Before installing the new sensor plate inspect the bore and make sure it is free of any debris.
5. Insert the supplied stepped spacer and new ABS Sensor plate. Make sure the spacer is inserted with the step facing outward into the sensor plate. It will only fit one way.

IMPORTANT: Make sure your sensor plate is pressed in with the sensor side to the outside.



FOR FL MODELS

0071-0006M ABS SENSOR PLATE FOR 21" WHEELS
0071-0007M ABS SENSOR PLATE FOR 23" WHEELS
0071-0008M ABS SENSOR PLATE FOR 26" WHEELS
0071-0009M ABS SENSOR PLATE FOR 30" WHEELS

SENSOR PLATE ID NOTE: 0071-0005M is used on all rear wheels and stock size front wheels and does not have any labeling. All other ABS sensor plate have the calibrated wheel/tire size labeled on the outer perimeter of the sensor plate.



JIM'S Tools # 939

CONTACT INFORMATION

Performance Machine
6892 Marlin Circle
La Palma, California
90623 - USA
Toll Free: 800-479-4037
Direct: 714-523-3000
Fax: 714-523-3007
Email: tech@performancemachine.com
Website: performancemachine.com