



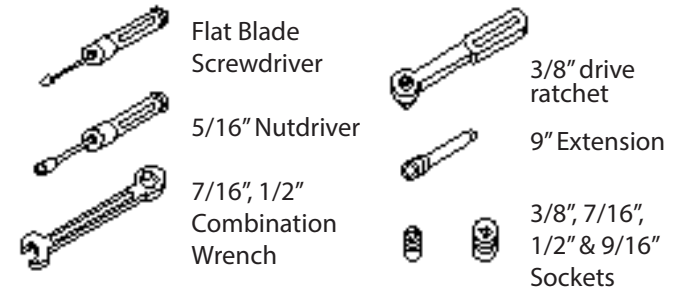
MORE POWER : LESS NOISE



Congratulations, you have purchased the finest exhaust system for your motorcycle on the market. Your Vance & Hines exhaust system is designed and crafted for maximum performance, a perfect fit, a great sound and unbeatable style. Please follow the installation instructions below and if you have any questions, please call our technical support line at (562) 926-5291.

Attention installer (if other than owner), please forward this instruction sheet to the owner of this product. These instructions contain valuable information to the end user.

TOOLS
REQUIRED



READ ALL INSTRUCTIONS BEFORE BEGINNING INSTALLATION

STOCK EXHAUST
SYSTEM REMOVAL

1. Loosen heat shield clamps on both the front and rear exhaust pipes to allow for easier access to the exhaust flange nuts.
2. Loosen the clamps holding the mufflers onto the head pipes.
3. Loosen, but do not remove, the exhaust flange nuts (2 for each cylinder) from each flange located at the cylinder head.
4. Remove the Hex head flange bolts holding the muffler to the muffler support bracket.
5. Carefully lift and remove mufflers by sliding them off each head pipe. NOTE: Assistance may be required.
6. The stock muffler clamps may be re-used. However Vance & Hines recommends replacing them with new clamps (Vance & Hines part # A335HW-R). If using the stock clamps, be sure the T-Bolt does not twist out of the groove during tightening. This could allow the clamp to loosen with use.

FIGURE 1

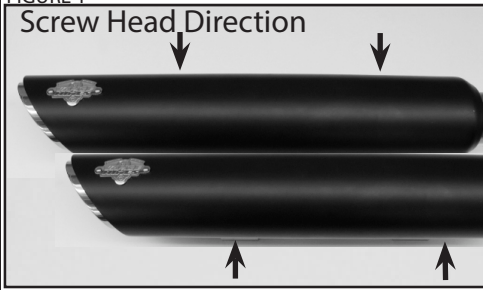


FIGURE 2

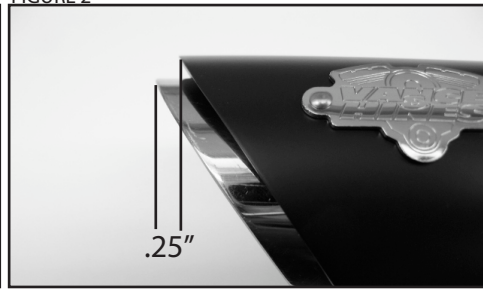


FIGURE 3



VANCE & HINES EXHAUST SYSTEM INSTALLATION

1. Remove the muffler assemblies and heat shields from their protective packaging. Place each heat shield on a non-abrasive surface such as a towel, blanket or carpet.
2. Carefully lay the muffler assembly into the heat shield and loosely install the hose clamps (supplied) by feeding the tail end of the clamp into the heat shield clips. Note the direction of the clamp screw heads, they must be accessible for adjustment when system is installed (Figure 1).
3. Adjust the heat shield so that the muffler body protrudes beyond the heat shield by .25 inches, and the muffler body and heat shield edges are parallel. (Figure 2). Tighten band clamps.
4. Slide a nutplate inside the bracket that is welded to each of the muffler bodies. Using the supplied 5/16" x 5/8" flange head bolts, attach the mounting brackets (stamped 456-P) to the muffler bodies. Leave them loose at this time (figure 3).
5. Slide stock exhaust clamps onto the nose of each muffler body. NOTE: Orient the clamp in a way that you can get to the nut after installation.
6. Slide mufflers onto the head pipes.
7. Using 5/16" x 3/4" hex head bolts, nuts, and washers (Supplied), attach the mufflers to the muffler support bracket (Figure 3). NOTE: Leave them loose at this time.
8. Align mufflers so they sit level. Tighten the muffler mounting bolts.
9. Tighten exhaust flange nuts on both the front and rear cylinders.
10. Tighten the clamp holding the muffler onto the head pipe. Check orientation with stock head pipe heat shield to insure that you do not have interference between the clamp and stock heatshield.
11. Align head pipe heat shields and tighten the hose clamps.
12. Check for clearance between all exhaust system components and accessories prone to heat damage.
13. Be sure to check and tighten all hardware before starting your motorcycle.

EXHAUST CARE - HELPFUL HINTS TO AVOID DISCOLORATION OF EXHAUST SYSTEM

- | | |
|---|--|
| <ol style="list-style-type: none"> 1. When installing a new set of black pipes, make sure your hands are clean and free of oil. After installation, thoroughly clean pipes with warm soapy water and a soft cloth. Dry with clean towel to remove any residue before starting the motorcycle. Do NOT use anything abrasive to clean pipes. 2. Avoid long periods of idling as this can cause discoloration. | <ol style="list-style-type: none"> 3. Intake leaks can cause the engine to run lean and overheat, this could lead to discoloration. 4. Make sure there are no exhaust leaks at the junction of the exhaust pipes and cylinder head. We recommend replacing gaskets if they are worn. |
|---|--|

VANCE & HINES OPTIONAL ACCESSORIES

FUELPAK		FP4# 66047	QUIET BAFFLE	21899	Quiet Baffle Competition Baffle Replacement Baffle
				21897	
				21874	

PLEASE NOTE: Every effort is made for Vance & Hines Exhaust Systems to provide improved cornering clearance. However, due to design and space limitations on some motorcycle models, ground and cornering clearance may not be improved and in some cases may be reduced. Be sure to follow proper installation instructions.

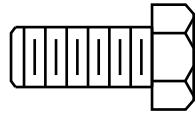


PACKING LIST

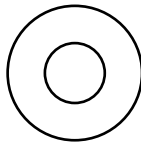
MORE POWER : LESS NOISE

ALL PARTS SHOWN ARE ACTUAL SIZE

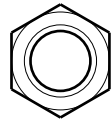
5/16 x 3/4 x 2



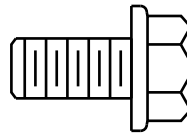
5/16 flat washer x 4



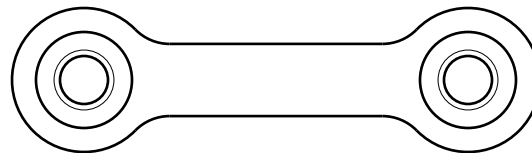
5/16 locknut x 2



5/16 x 5/8 x 4

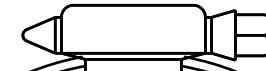


dog bone nut plate x2



(1.81-2.75")

#36 hose clamp



#28 Hose Clamps x 4

PARTS NOT SHOWN:

D745RC Muffler Assembly	x2
D746HP Muffler heat shield	x1
D755HP Muffler heat shield	x1
457-P Bracket	x1

WARRANTY

Vance & Hines exhaust systems are warranted against defects in material and workmanship for a period of 90 days from the date of purchase from an authorized dealer. This warranty does not cover discoloration of chrome finishes. This warranty is limited to the repair or replacement of a product proven to be defective from normal use. Vance & Hines exhaust systems are designed to fit and operate on OEM motor and chassis. This warranty does not cover any product subject to abuse, misuse, improper installation or modification.



Connect. Tune. Ride.

From the team that brought you The Fuelpak FP3, the best-selling ECU tuner in the world for Harley-Davidson motorcycles, the Vance & Hines FP4 is the most intuitive tuning tool on the market, giving you the power to control your motorcycle's tune and offers the best-in-industry support from our FP4 technicians, all from your smartphone.

- Download and Flash Maps
- Live Data Viewing
- Autotune Feature for Map Customization

Visit vanceandhines.com to learn more about FP4.

Qualified Manufacturer Declared 49-state Federal Emissions Compliant Part.



Emissions Notice:

In California, in order to meet Air Resources Board emissions requirements, certain aftermarket part applications have been identified as replacements, and others have received ARB Executive Orders. All other emissions related aftermarket parts are for competition use only. A list of replacement parts and EO parts, and corresponding fitment is provided at vanceandhines.com/california.

Warranty:

All Vance & Hines products are warranted against defects in material and workmanship for a period of 90 days. This warranty does not cover discoloration or rust. This warranty shall be limited to the repair or replacement of the product, which may be proven defective under normal use. Vance & Hines will not warranty any system that has been abused, misused, improperly installed or modified.

Dealers or distributors are not authorized to make dispositions binding upon Vance & Hines. Vance & Hines will not be responsible for any labor charges incurred in removing or replacing any system under warranty. A return authorization number and a copy of the original purchase invoice must accompany all returns. Parts returned without a return authorization may be refused.