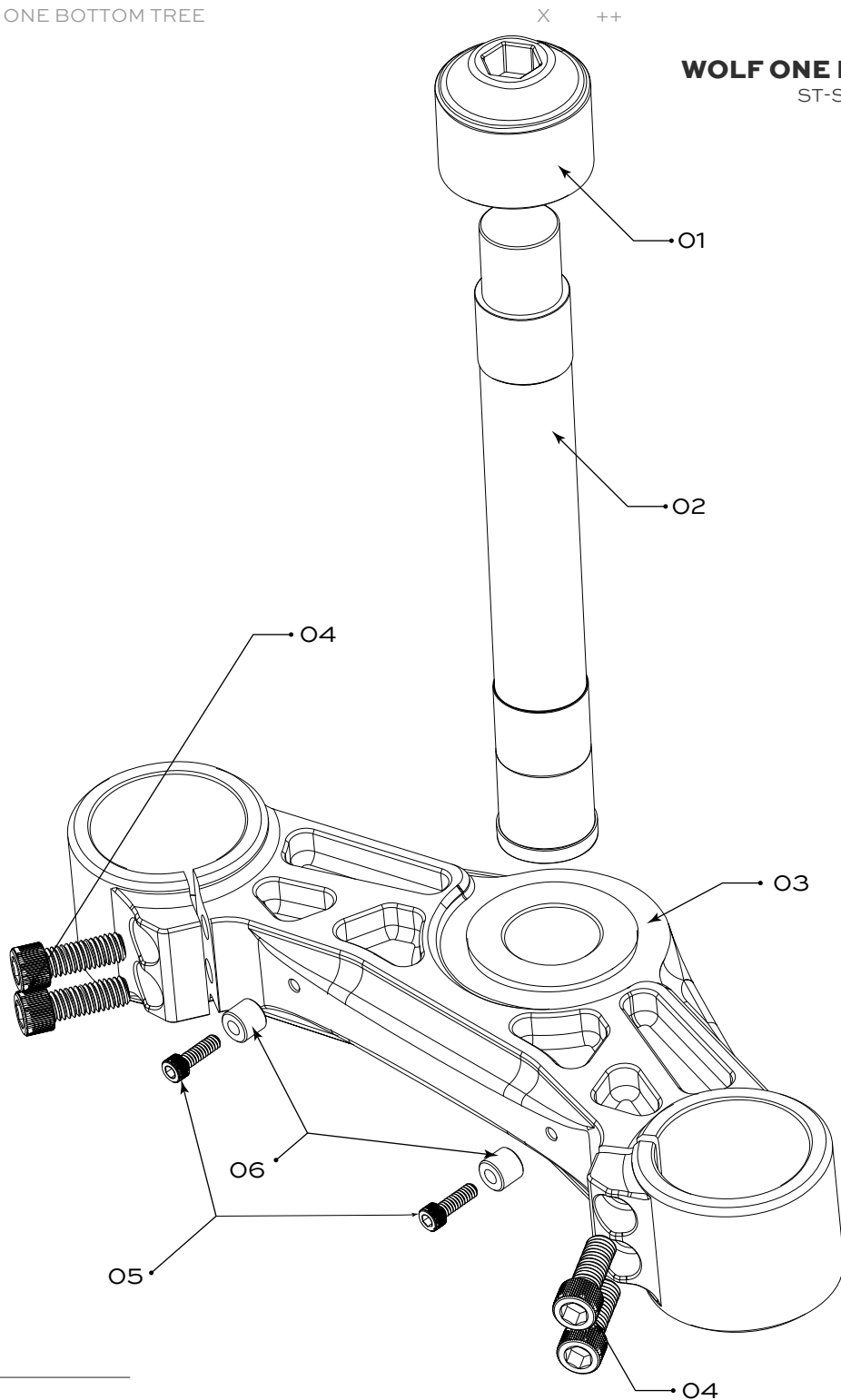


WOLF ONE BOTTOM TREE
ST-STT-044

REPLACEMENT PART LIST:

ITEM	QTY	PART NO.	PART
1	1	ST-STT-016	WOLF ONE YOKE NUT
2	1	ST-TT-304	30MM STEERING STEM
3	1	ST-STT-012	WOLF ONE BOTTOM CLAMP
4	4	1173540	3/8 - 16 X 1 STAINLESS STEEL CAP SCREW
5	2	0175185	10-24 X 3/4 STAINLESS STEEL CAP SCREW
6	2	ST-STT-112	DELTRIN SPACERS



TORQUE SPECS:

WOLF ONE YOKE NUT — **25 FT. LBS. INITIAL TORQUE THEN TIGHTEN OR LOOSEN WITH FALL AWAY.**

(#04 - BOTTOM TREE) 3/8"-16 THREAD SIZE 1" LONG 18-8 STAINLESS STEEL SOCKET HEAD SCREW — **15-18 FT. LBS.** — COAT WITH LOCK-TITE 243

(#05 - BOTTOM TREE) 10-24 X 3/4 STAINLESS STEEL CAP SCREW — **70 IN. LBS.** — COAT WITH LOCK-TITE 243

INSTALL DELTRIN SPACERS ARE TO SPACE THE BOTTOM ABS BRACKET AWAY FROM THE TRIPLE TREE.

WOLF ONE BOTTOM TREE

ST-STT-044

NOTE:

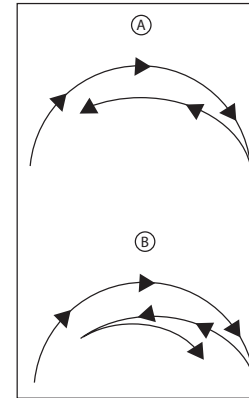
**This guide covers 2014 and Up FLTR Road Glides.
Other fitments require additional modifications.**

INSTALLATION GUIDE¹:

- 01 Refer to the OEM service manual for disassembly of relevant stock components.
- 02 Clean/inspect races, bearings & dust shields then re-grease your bike's neck bearings for install.
- 03 Install/slide the lower neck bearing dust shield followed by the lower neck bearing onto stem. Press them carefully onto the stem attached to the lower triple tree.
- 04 Remove the Yoke Nut from the stem. Press the lower bearing down the stem towards the dust shield until firmly seated at the stem's base. The bearing should spin freely.
- 05 Apply the specified and appropriate grease to the upper and lower neck bearing races.
- 06 Carefully slide bottom triple tree and stem up through frame neck.
- 07 Carefully place the top neck bearing onto the stem.
- 08 Gently press the upper bearing down the stem towards the fork neck until firmly seated on the top bearing race. The bearing should spin freely. Place top dust shield over the top neck bearing.
- 09 Slightly loosen yoke nut until no friction is felt.
- 10 Install bars and risers onto top triple tree.
- 11 Install the top triple tree onto yoke nut, ensure that it is seated properly onto the bearing dust shield. Ensure the triple tree moves freely from side to side.
- 12 Completely remove the pinch bolts. Starting with one side of the triple tree insert the delrin wedge or a plastic shim in the pinch gap to expand both top and bottom fork clamping area to make sliding the fork into the triple trees easier. Be sure to avoid damaging the fork legs. Repeat process with opposite side.
- 13 Reinstall all of the OEM components that have been removed.

SETTING FALL AWAY:

- Raise the motorcycle so that the front and rear tires are the same distance from the floor.
- To set initial torque of the steering bearing, tighten the Wolf One Yoke Nut 25-28 ft. lbs. **NOTE: This torque spec seats the bearing into the race.** Loosen or tighten the Yoke Nut in 1/4" increments until proper steering free play is achieved.
- Turn the front wheel to the left Fork stop and then let go. The wheel should swing from side to side, finally stopping in the swing specified in **schematic 3**. If it stops in the lesser number swing it should be at or after the straight-forward position.
- Make sure the clutch cable or main harness is not influencing the swing momentum in any way.
- A steering head that is too tight can interfere with the vehicle's ability to absorb a weave. A steering head that is too loose can interfere with the vehicle's ability to absorb a wobble.



SCHEMATIC 3

TORQUE SPECS:

WOLF ONE YOKE NUT — **25 FT. LBS. INITIAL TORQUE THEN TIGHTEN OR LOOSEN WITH FALL AWAY.**

(#04 - BOTTOM TREE) 3/8"-16 THREAD SIZE 1" LONG 18-8 STAINLESS STEEL SOCKET HEAD SCREW — **15-18 FT. LBS.** — COAT WITH LOCK-TITE 243

(#05 - BOTTOM TREE) 10-24 X 3/4 STAINLESS STEEL CAP SCREW — **70 IN. LBS.** — COAT WITH LOCK-TITE 243

INSTALL DELRIN SPACERS ARE TO SPACE THE BOTTOM ABS BRACKET AWAY FROM THE TRIPLE TREE.

¹Kraus recommends that the Wolf One Bottom Tree be installed by a certified motorcycle technician.