



Custom Dynamics®
ProBEAM® Fillerz® LED Inserts
Installation Instructions

We thank you for purchasing the Custom Dynamics® ProBEAM® Fillerz® LED Inserts! Our LEDs offer maintenance free service and higher visibility. Our ProBEAM® product line utilizes the latest technology and automotive grade components to ensure the highest level of reliable service. Custom Dynamics® offers one of the best warranty programs and customer support in the industry. If you have any questions during the installation of this product please call us at 1(800) 382-1388.

Part Number: PB-FILL-23-RB, PB-FILL-23-SB
PB-FILL-23-RC, PB-FILL-23-SC
US Patent D814673, D824553 & D846,166
China Patent ZL201730501975.7

Package Contents:

- ProBEAM® Fillerz® LED Inserts (Pair)
- 4" Cable Tie (10)
- ProBEAM® Eclipse® Module (Pair)

Fitment: 2023-2024 Harley Davidson® CVO Street Glide (FLHXSE), CVO Road Glide (FLTRXSE), 2024 Street Glide (FLHX), Road Glide (FLTRX), and CVO Road Glide ST (FLTRXSTSE)



Please read all Information below before Installation

Warning: Remove seat and disconnect the negative battery cable from battery; Failure to do so may result in electrical shock, injury or fire. Secure negative battery cable away from positive side of battery and all other positive voltage sources on vehicle.

Safety First: Make sure the bike is parked on a level surface and bike's mechanical components are cool to the touch.

Notice: Always wear appropriate safety gear including safety glasses when soldering or performing any electrical work. It is highly recommended that safety glasses be worn throughout this installation process. Read all directions before starting project.

*****IMPORTANT*****

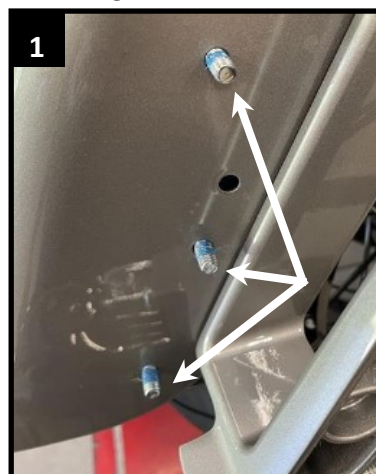
CAN Bus Models: This LED product is BCM compliant. However, you must perform a BCM sync.

1. Turn Ignition on, but do not start the bike
2. Turn on 4 way hazards by pressing the hazard button on the controls. Count 10 flashes and deactivate.
3. Turn on 4 way hazards for another 10 flashes and deactivate.
4. Turn Ignition OFF then back ON. Turn on 4 way hazards.



Installation:

1. Remove the saddle bags to allow access to the fender strut support brackets on the fender.
2. Remove the left and right OEM rear taillights by removing the three flange nuts from the studs on each side of the fender. See Figure 1.
3. Remove the stud plate from the fender that is held on by 3M tape.
4. Disconnect the OEM JAE connector from the backside of each OEM rear Taillight.



Questions? Email: info@CustomDynamics.com or Call us at: 1 (800) 382-1388 M-TH 8:30AM-5:30PM / FR 9:30AM-5:30PM EST

Installation Instructions - Page 2

5. Clean the surface area of the fender strut support bracket areas with the denatured alcohol and allow to dry.
6. Verify Left and Right ProBEAM® Fillerz® panels before installing. See Figure 2
7. Remove the red protective film of the 3M™ tape from the back of ProBEAM® Fillerz®. Line up the bottom edge of ProBEAM® Fillerz® with bottom edge of bag support bracket. Push ProBEAM® Fillerz® into place until the alignment tabs click. Apply pressure evenly over the ProBEAM® Fillerz® to ensure the tape is applied evenly. See Figure 2.
Note: The ProBEAM® Fillerz® are designed to be secured in place by the 3M™ backing tape on the Fillerz® Inserts, not by the alignment tabs (See Figure 2).
8. Connect the male connector on the ProBEAM® Eclipse® Module to the female connector on the ProBEAM® Fillerz®. See Figure 3.
9. Connect the 4-position female JAE connector on the ProBEAM® Eclipse® Module to the corresponding 4-position JAE on the bike. For the Right side use the connector with the Brown wire. For the Left side use the connector with the Violet wire. See Figure 3.
10. Use the Provided 4" Cable Ties to secure the ProBEAM® Eclipse® Module and ProBEAM® Fillerz® behind each saddlebag.
11. Reinstall negative battery terminal and test running, brake and turn signal functions.
12. Reinstall saddlebags and seat.

